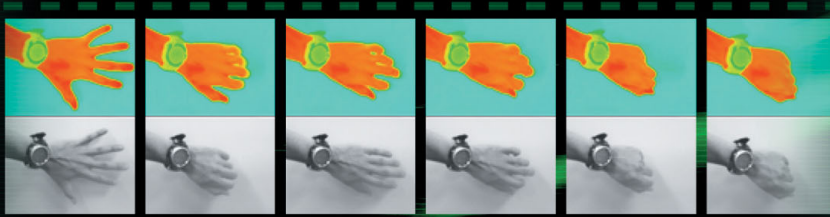


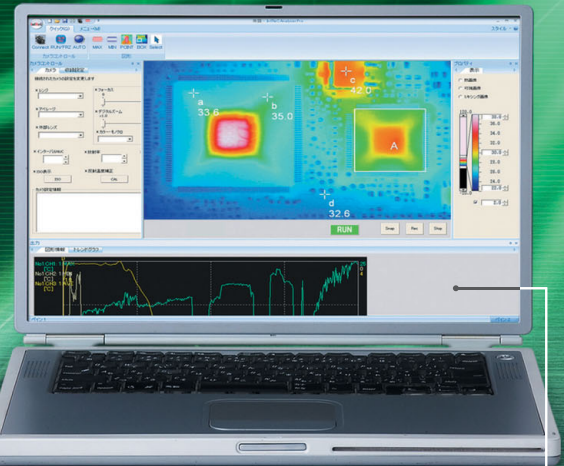
High-Performance - Multi-Purpose Thermography Camera

NEW *Thermography R300*

- Building Inspections
- Power Equipment Diagnostics
- R & D Demands High Sensitivity, Precision & Quality



Simultaneous Thermal/Visible/Fusion Video Recording Feature.



Powerful PC Software NS9500PRO
Included with Camera. (Standard Accessories)



NS9500PRO Software Features:

- Simultaneous Video Capture of Thermal & Visible Images on PC via USB 2.0
- Thermal/Visible & Split Screen Display Functions Easily Identify Objects of Interest
- PC Change of Temperature Scale and Focusing
- Real-time, Point/Box Analysis with Graphics of MAX/MIN/AVG
- Create Real-time Trend Graphs & Isotherm Displays
- Easily Set Emissivity & Other Functions

Thermography R300 incorporates the latest advanced IR Sensor technology produced in Japan.

World-class High Image Quality & High Resolution. **Enhanced Field Measurement Features.**

- High resolution (NETD) of 0.05°C(at 30°C)
- High performance Accuracy:±1°C
- Spatial Resolution(I.F.O.V.)1.21mrad (standard lens)

- Ergonomic Handheld Camera design supports easy image capture at any angle using included View Finder and Multi-angleTilting Color LCD Display.
- Auto focusing feature & Remote Control Unit .

Various Recording Modes **Various Temperature Measuring Features**

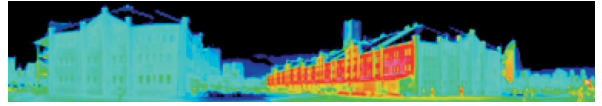
- Direct Recording on SD Card in Fully Radiometric(10fps)
- Interval recording(3s to 1 h)
- Event Trigger Recording Mode
- Voice Recording(30s)

- 3.5 inch Color LCD Screen with Tilt function & View Finder
- 3.1Mega pixels Visual Camera
- Focal Distance:10cm to infinity (standard lens) or (with STD lens)
- Various Lens Configurations including:2x telephoto, 0.5x Wide angle, close-up, etc.



Model Functions R300W2-NNU Specifications R300W2-DNU

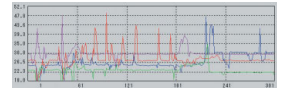
By panning the R300 camera in a horizontal (or vertical) plane, a Panoramic Thermal Image is recorded without need for position alignment. This feature provides fast, wide angle, full radiometric images for reports and analysis.



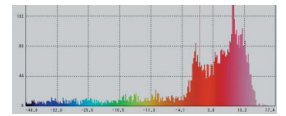
Measuring ▶ Analyze ▶ Report Generation

Easy 3-Step Thermal Image Processing and Report Generation Software. Intuitive Menu System simplifies data analysis and report creation.

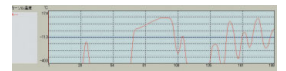
- Point/Line/Box analysis with graphic representations (MAX/MIN/AVG).
- Numerous Graphing Features such as Histogram & Trends
- Free format Reports using WORD or Excel (add trademark symbols)
- Default Report Template can be easily edited even after report output.
- Numerical Data Conversion provided.



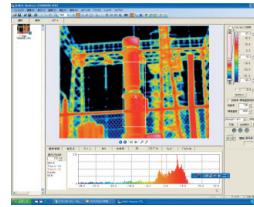
Trend graph



Histogram



Line profile



OS :WindowsXP, WindowsVista, Windows7(32bit)

Options	Model	Specifications / Remarks
2000°C High Temperature Range	IRR-HR300B	200°C to 2000°C
2x Telephoto Lens	TVL-2044B	11°(H) x 9°(V)
0.5x Wide Angle Lens	TVL-2011B	44°(H) x 34°(V)
Close-up Lens		
AC Adaptor	RC45-09-110V/220V	110v or 220v
Rechargeable Battery Pack	T2UR18650F5928B	(2500mAh)
Battery Charger	NC-LSC05-110V/220V	Driving Hours:2 Hours(typical)
LCD Hood	IRU-F01A	110v or 220v
Tripod(small)	U9800	

Basic Performance

Operating & Set-up controls

Display Performance

Measurement & Analysis Mode

Image File Storage

Interfaces

Others Specifications

Power Source

Environment

Dimensions Weight

Hard Case, AC Adaptor, Battery Pack, Battery Charger, SD Card, USB cable, GripBelt, Shoulder strap, Lens-CAP, Wired Remote Control unit, Operation Manual, Software (See above), wired-remotecontrol-unit Lithium-ion Battery Pack(2,500mAh), 2 Hours of Continuous Use (typical)
 AC100V to 220V, 50/60Hz
 -15°C to 50°C, at< 90%RH
 29.4m/sec²(3G), 294/sec²(30G)
 Compliant to CE (Class-A)
 Protection Code: IP54 Equivalent

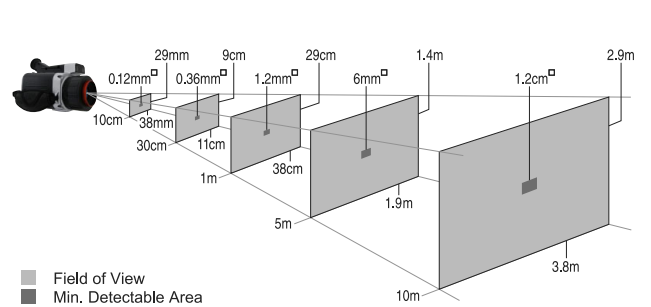
Approx. 121mm(H)x105mm(W)x193mm(D)excluding projections
 1.3 kg (including Battery Pack)

*1:Operating Temperature: 10~40°C at Range1only, others ±2°C or ±2%
 *2:For temperature accuracy: 30cm to infinity

*Company names, merchandise name listed on this brochure are brand or trade mark of each company.
 *Listed specifications/Design, etc. may be subjected to change for improvement without notice.
 Printed color images may differ slightly from actual product color image.

NEC Avio Infrared Technologies Co., Ltd.

1-5, Nishi-Gotanda 8-chome, Shinagawa-ku,
 Tokyo 141-8535, Japan
 Phone : +81-3-5436-1614
 Fax : +81-3-5436-1395
 E-mail : osd@nec-avio.co.jp
 Web : http://www.nec-avio.co.jp/en/



⚠ WARNINGS & CAUTIONS

- Before using this product, please carefully read the provided Operation Manual "WARNINGS" & "CAUTIONS" section to ensure proper operation.
- Please do not place the product in high temperature, high humidity or high inert gas environments.

Distributor: